



Connecting Arctic Research Across Boundaries Since 1988

Working Across Knowledge Systems in Arctic Research, Policy, and Education

Lisa Sheffield Guy, Janet Warburton, Brit Myers,
and Helen V. Wiggins

Arctic Research Consortium of the United States (ARCUS)
lisa@arcus.org

APECS INTERNATIONAL ONLINE CONFERENCE
20 MAY 2020

Arctic Research Consortium of the U.S. (ARCUS)

Mission: ARCUS facilitates cross-boundary Arctic knowledge, research, communication, and education in the U.S., and with partners across the globe.

ARCUS Values

Shared Knowledge

Transparency

Multi-Knowledge and Cross-Disciplinary Collaboration

Informed Decision-Making

Engagement

Advancing Arctic Research

From multi-disciplinary to multi-knowledge system

Defining our terms

- **What do we mean by multiple knowledge systems?**
 - Scientific, Indigenous/traditional ways of understanding and knowing.
- **What do we mean by co-production of knowledge?**
 - Partnership between researchers and Indigenous knowledge holders in all stages of research.

Great resource: <https://kawerak.org/co-production-of-knowledge-in-research-valuing-traditional-knowledge/>

Indigenous Engagement in Arctic Research

“Indigenous Peoples’ knowledge systems hold methodologies and assessment processes that provide a pathway for better understanding the Arctic than using a scientific lens alone.”

– C. Behe, R. Daniel, & J. Raymond-Yakoubian



2020.05.11

©Clarence Irrigoo Jr.
Gambell, Alaska

Collaborating Across Knowledge Systems

ARCUS Leadership and Programs

ARCUS Board of Directors

- Indigenous board members provide high-level organizational direction.

ARCUS Programs

- Designed and managed in cooperation with Indigenous-led organizations.



Arctic Indigenous Scholars

www.arcus.org/indigenous-scholars



Rosemary Ahtuanguak & Theresa John

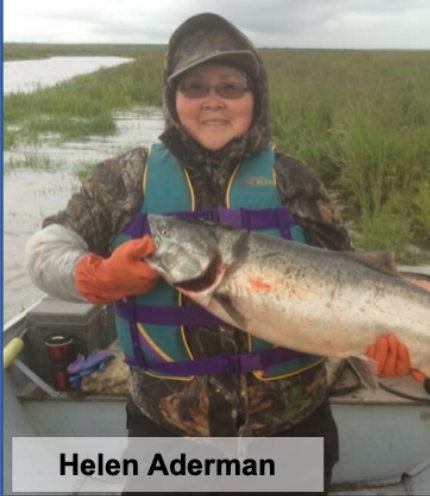
- Program began in 2018 with two scholars
- Scholars selected by volunteer selection committee
- Scholar defined as expert in own knowledge system



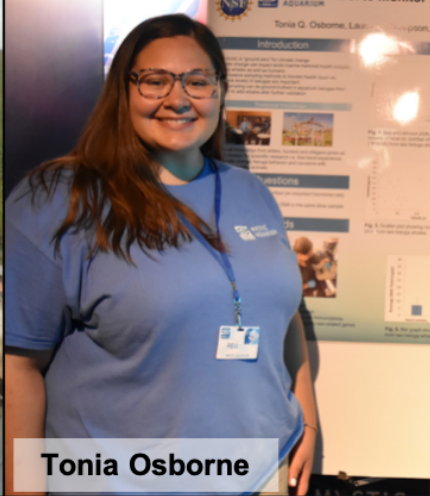
Arctic Indigenous Scholars

www.arcus.org/indigenous-scholars

2019 Arctic Indigenous Scholars



Helen Aderman



Tonia Osborne

- 2019 - Four scholars selected
- 2020 – Three scholars, delayed travel



Mark Miklahook



Beth Leonard

2020 ARCTIC INDIGENOUS SCHOLARS



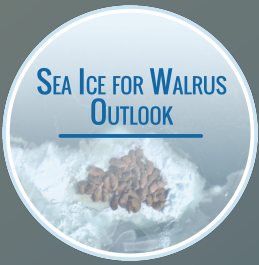
KIMBERLY PIKOK



RICHARD B. SLATS



NAIDENE BAECHLER



Sea Ice for Walrus Outlook

Indigenous knowledge

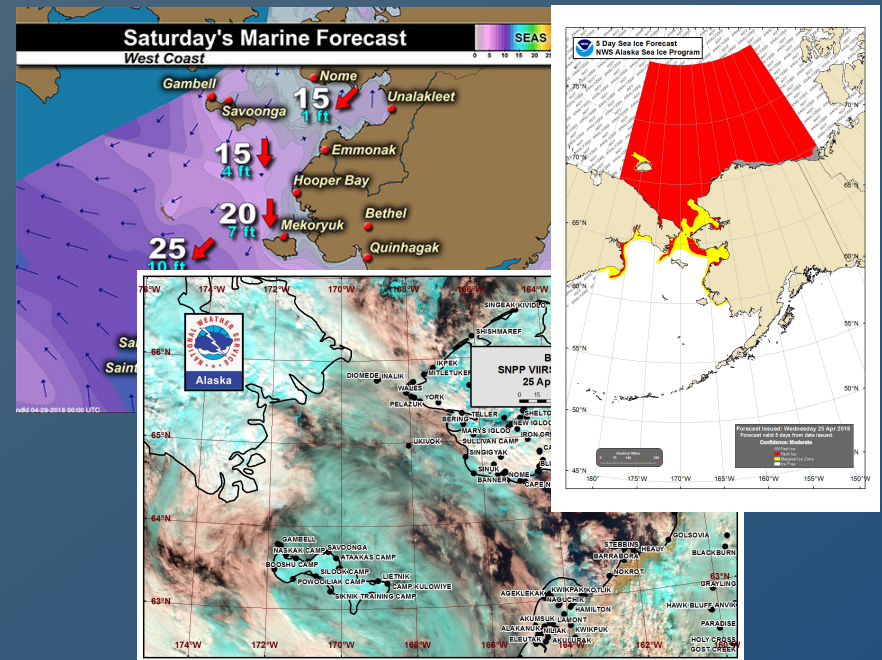


Sea Ice Science and Weather Products

Observations from Brevig Mission

30 April 2020 – Marcus Barr

Warmed up past couple days, cracks on the beach are getting bigger. Myself and another guy got young bearded seal on the ice and my youngest brother got a few ringed seals also. Ice edge is still pretty far out. Locals are seeing geese now. I noticed that not far west of Port Clarence the ice is not thick as in front of Brevig, it is close to a foot or a couple inches less thick.

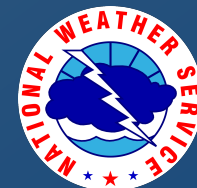


Weekly spring forecasts provide subsistence hunters, local communities, and marine resource managers with practical, regional information on weather and sea ice conditions.



Eskimo Walrus Commission
"To protect the pacific walrus population."

www.arcus.org/siwo



The Arctic in the Classroom

Partnering scientists, educators, & communities to improve Arctic education.

www.arcus.org/tac



Web Resource for Arctic Researchers



ARCTIC RESEARCH CONSORTIUM OF THE UNITED STATES

[Home](#)

[About](#)

[Membership](#)

[Programs](#)

[Meetings](#)

[Calendar](#)

[Resources](#)

[Donate](#)

Search



Conducting Research with Northern Communities

Documented Practices and Resources for Productive, Respectful Relationships Between Researchers and Community Members

Scientific research in the Arctic necessitates good communication and cooperation with northern communities. The following list is a compilation of resources, recommendations, and "best practices" from a variety of organizations. This webpage is intended to be a living resource and will be updated as new information becomes available. Each community has a unique set of requests for researcher conduct and level of desired inclusivity. As such, direct communication and relationships with community leaders should be the highest priority.

Please contact Lisa Sheffield Guy (lisa@arcus.org) or Helen Wiggins (helen@arcus.org) with:

- Comments or additional resources for this page;
- Suggestions for tools or activities that would foster collaboration between researchers and Arctic community members;
- Ideas to advance inclusion of Indigenous communities in research; or
- Help finding contacts and representatives in northern communities.

We are grateful to the following people for providing feedback and additional resources: Carolina Behe (Inuit Circumpolar Council - Alaska), Vera Metcalf and Julie Raymond-Yakoubian (Kawerak, Inc.), Karen Pletnikoff (Aleutian Pribilof Islands Association, Inc.), and Kaare Erickson (UIC Science, LLC).

This webpage is supported by the National Science Foundation - Arctic Sciences Section through Cooperative Agreement PLR-1304316.

Jump to Section

1. [Documented Practices and Resources: Across Northern Communities](#)
2. [Documented Practices and Resources: Alaskan Communities](#)
3. [Documented Practices and Resources: Canadian Arctic Communities](#)
4. [Resources for Community-Based Monitoring](#)
5. [Resources from Outside the Arctic](#)

www.arcus.org/resources/northern-communities

Lessons from Arctic Research

- **Contact local leaders or Indigenous organizations to find collaborators**
 - **Native corporations, Inuit Circumpolar Council, ARCUS, and others can help you connect.**
- **Engage early!**
 - **Include Indigenous co-PIs and collaborators in identification of research questions & on proposals.**
- **Good communication**
 - **Communicate in person, when possible.**



Lessons from Arctic Research

Engaging Indigenous communities in research...

- Is not just outreach – Rather, it is an invitation for full participation and co-production.
- Goes beyond citizen science – Includes Indigenous experts as funded collaborators and professional consultants.



Lessons from Arctic Research

ARCUS is a work in progress! We will continue to increase Indigenous engagement in Arctic research by:

- Including more Indigenous organizational members & staff;
- Improving communication with Alaskan Indigenous communities (in person, when possible!); and
- Continue to build and increase efforts at Alaska Native meetings and events.



Join the ARCUS Network

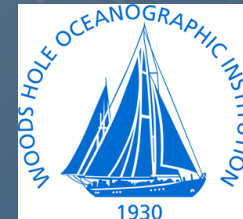
- **All Organizations and Individuals Can Join!**
 - You can join, becoming a connector of Arctic research
- **We are seeking collaborative partners to leverage our impact.**
 - We can be your partner in efforts connecting Arctic research and education.
- **We'd like to know about your related activities, and to help promote them.**
 - Our communication networks are available to help.

See www.arcus.org for more details

ARCUS
ARCTIC RESEARCH CONSORTIUM
OF THE UNITED STATES



28 Institutional Members



Thank you!

Questions?

Contact:

Lisa Sheffield Guy

lisa@arcus.org

Supported by:

National Science Foundation's Division of Arctic Sciences (PLR-1928794) and
U.S. Department of Justice.

