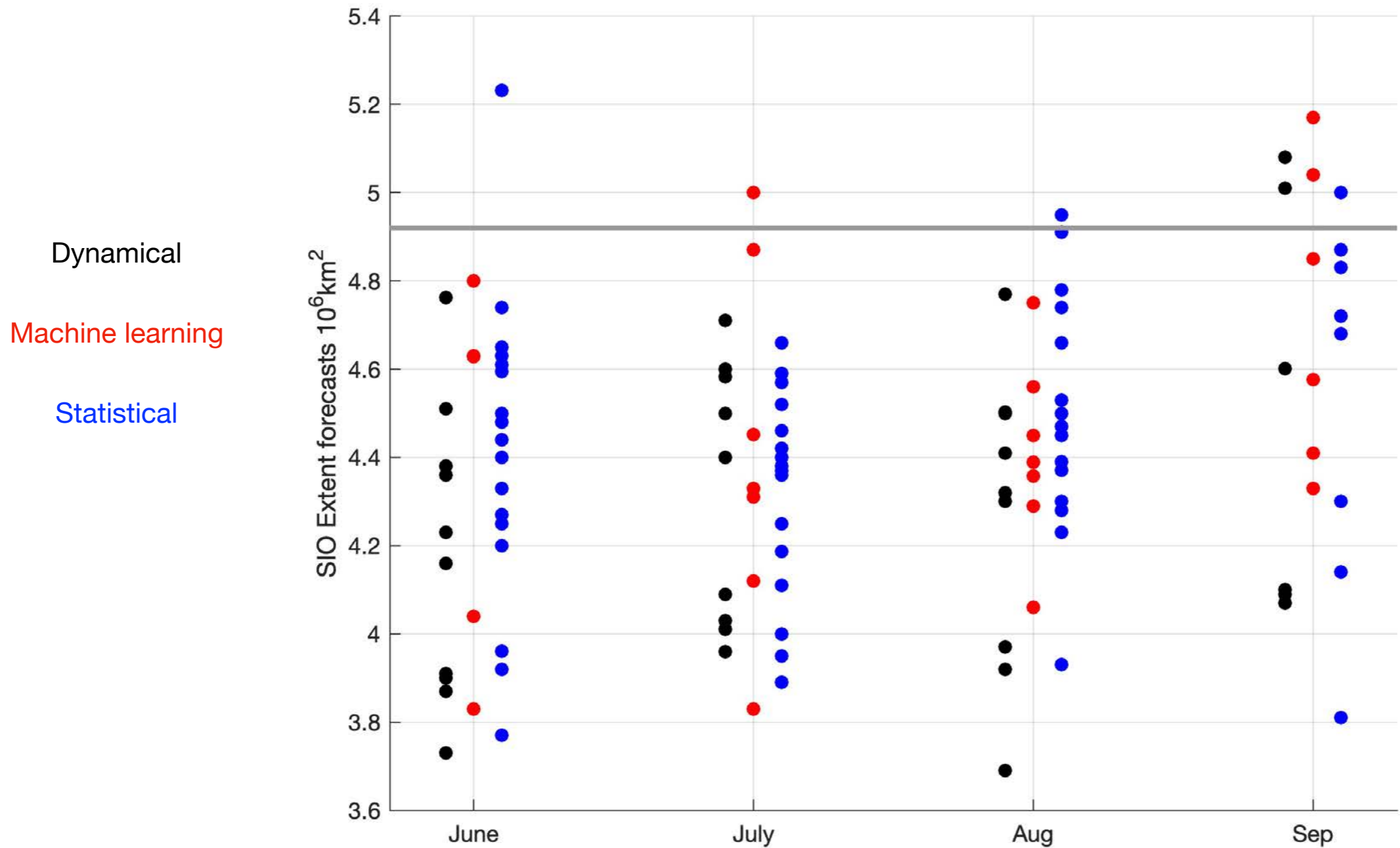
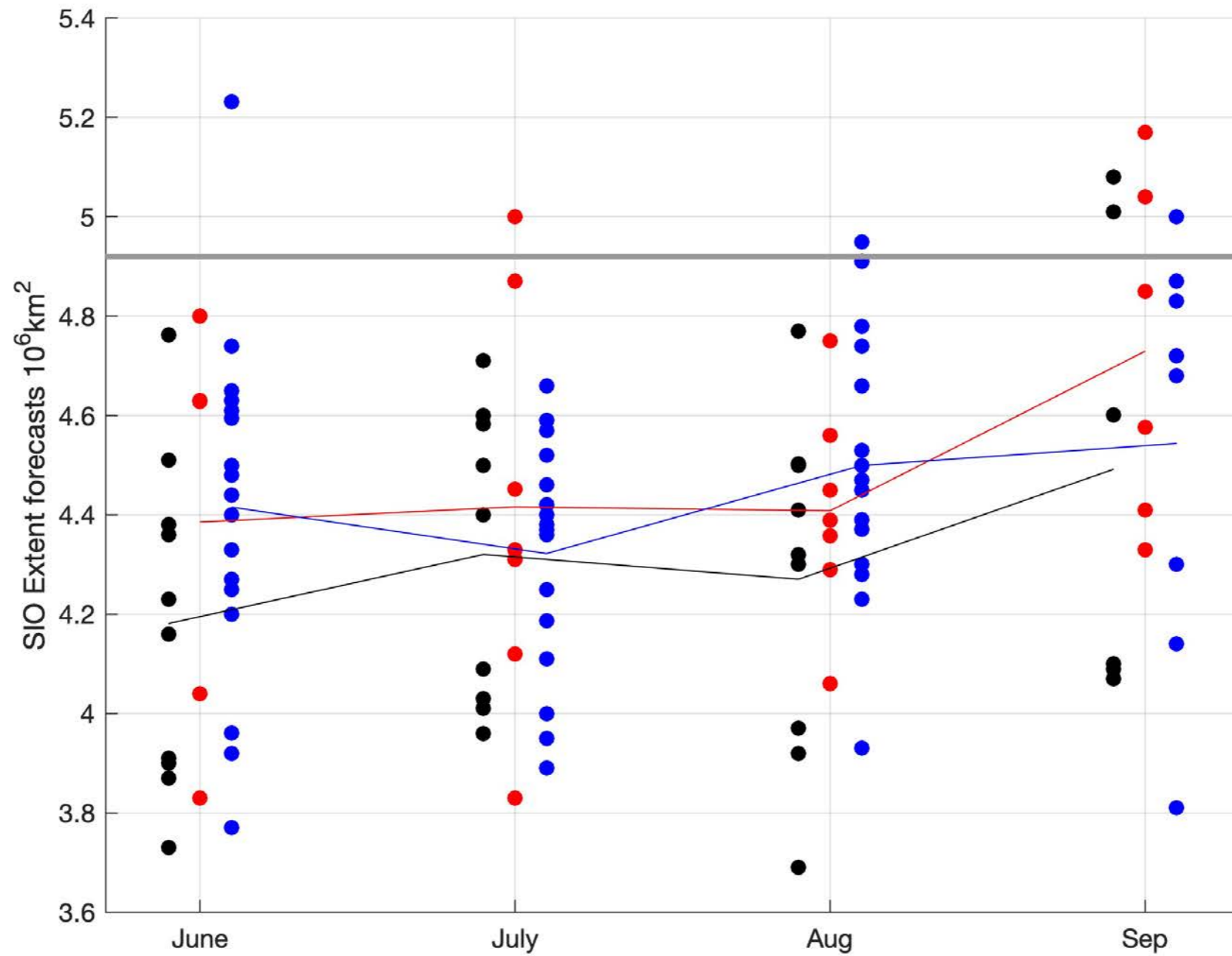


# Summary of skill of 2021 SIO extent and sea ice probability forecasts across models

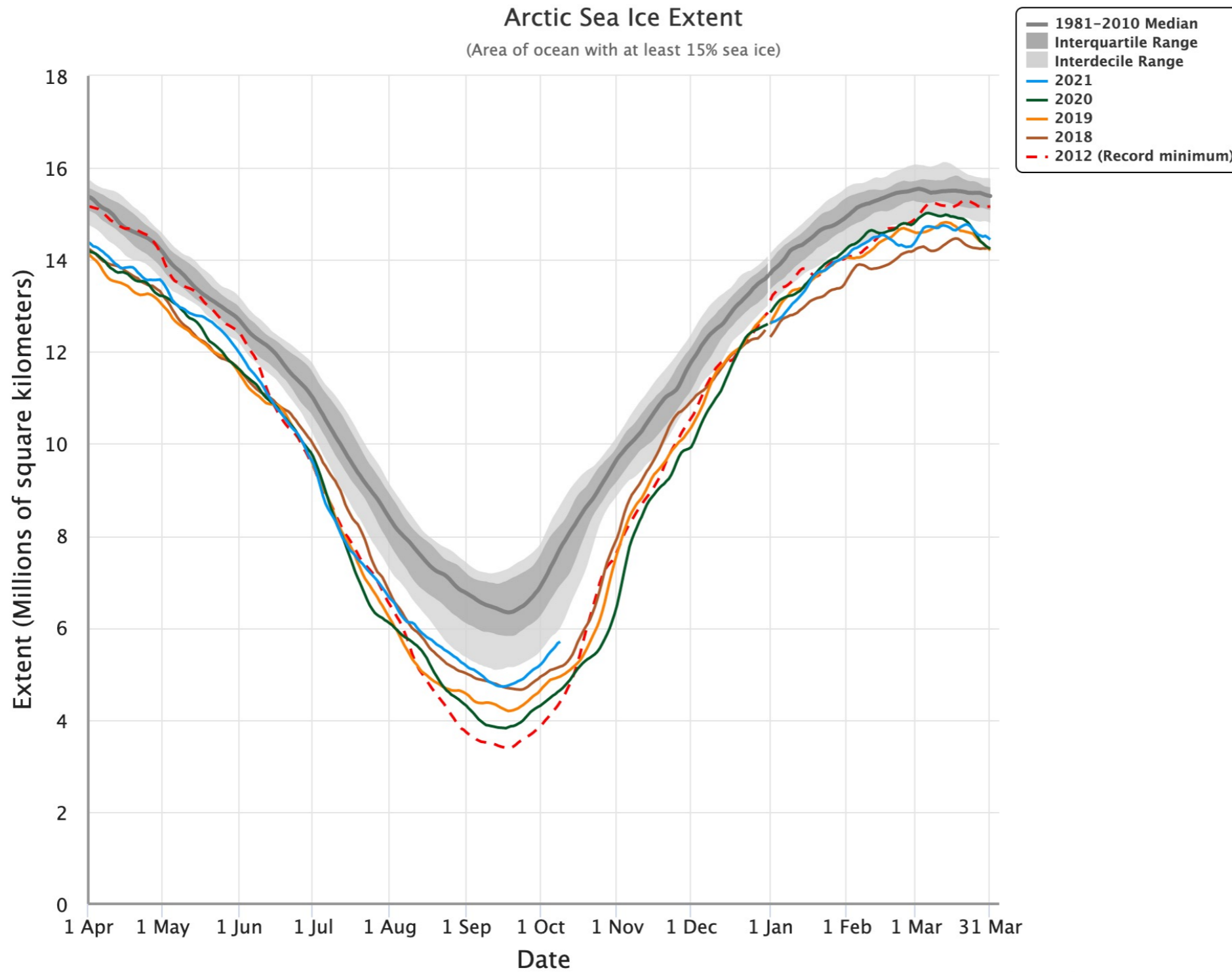


# Summary of skill of 2021 SIO extent and sea ice probability forecasts across models

Dynamical  
Machine learning  
Statistical

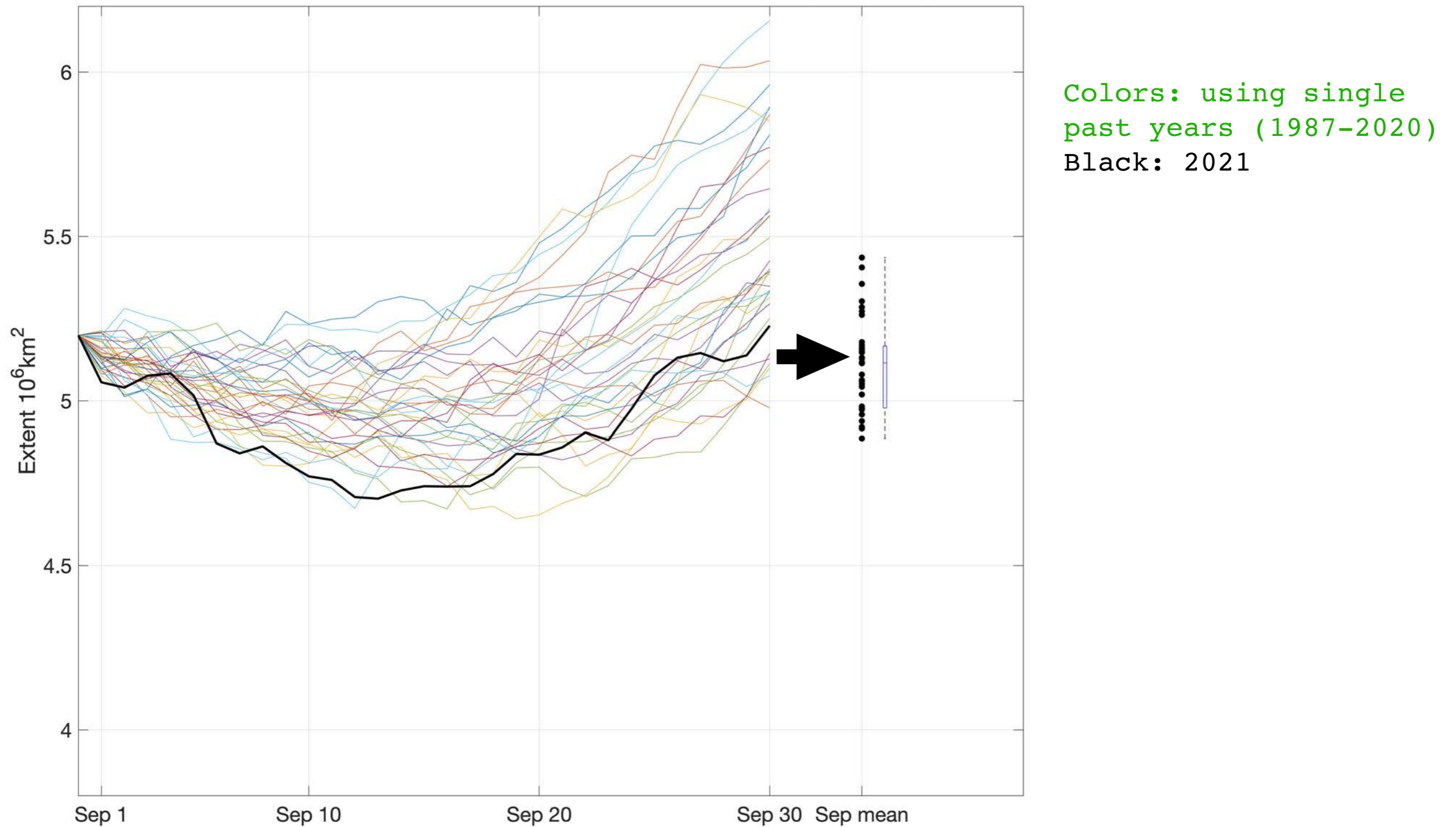


# Focus on September SIO forecasts (requested by 9/10)



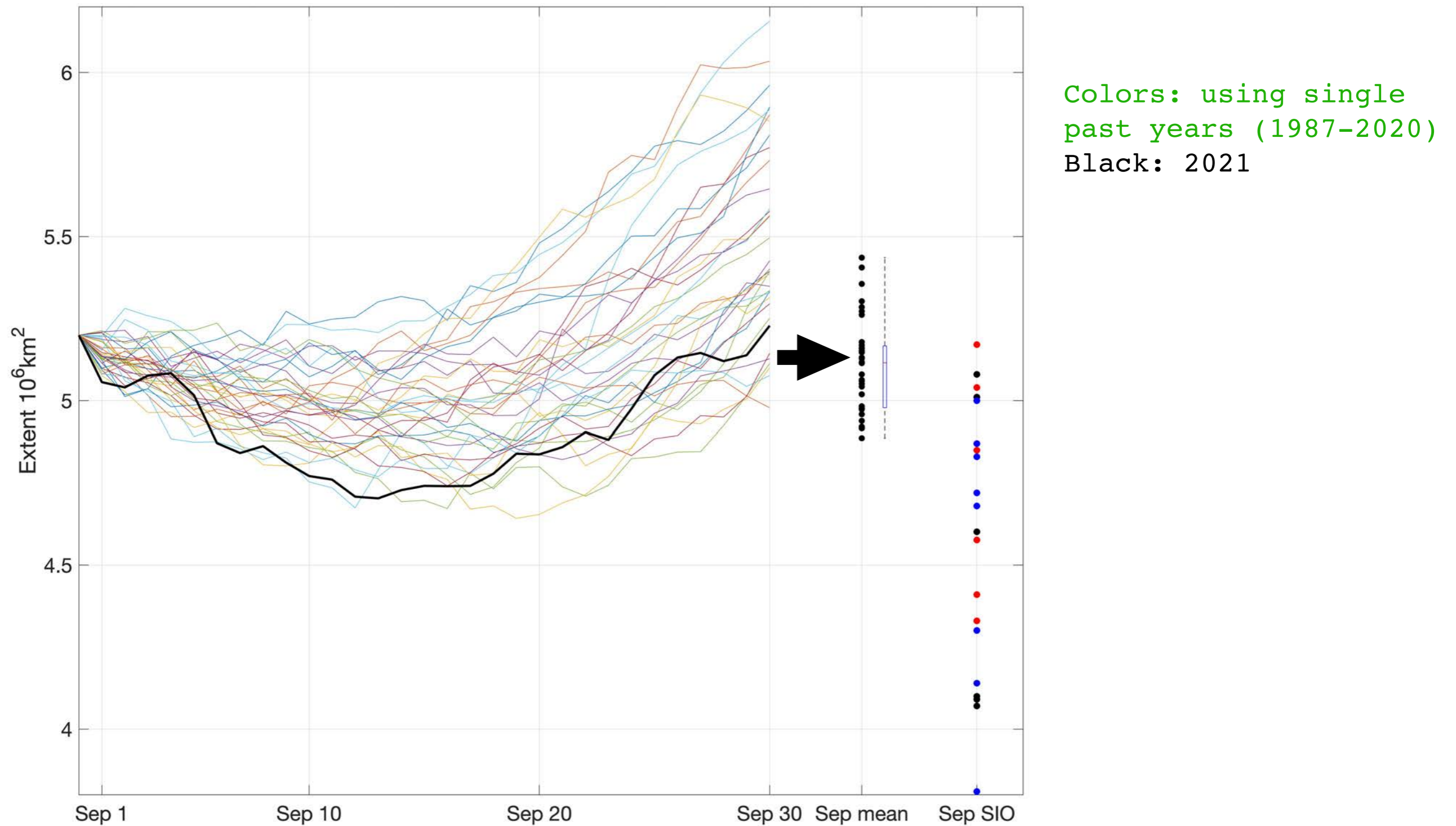
# Focus on September SIO forecasts (requested by 9/10)

Aug 31 2021+ historic September SIE tendencies ('Meier model')



# Focus on September SIO forecasts (requested by 9/10)

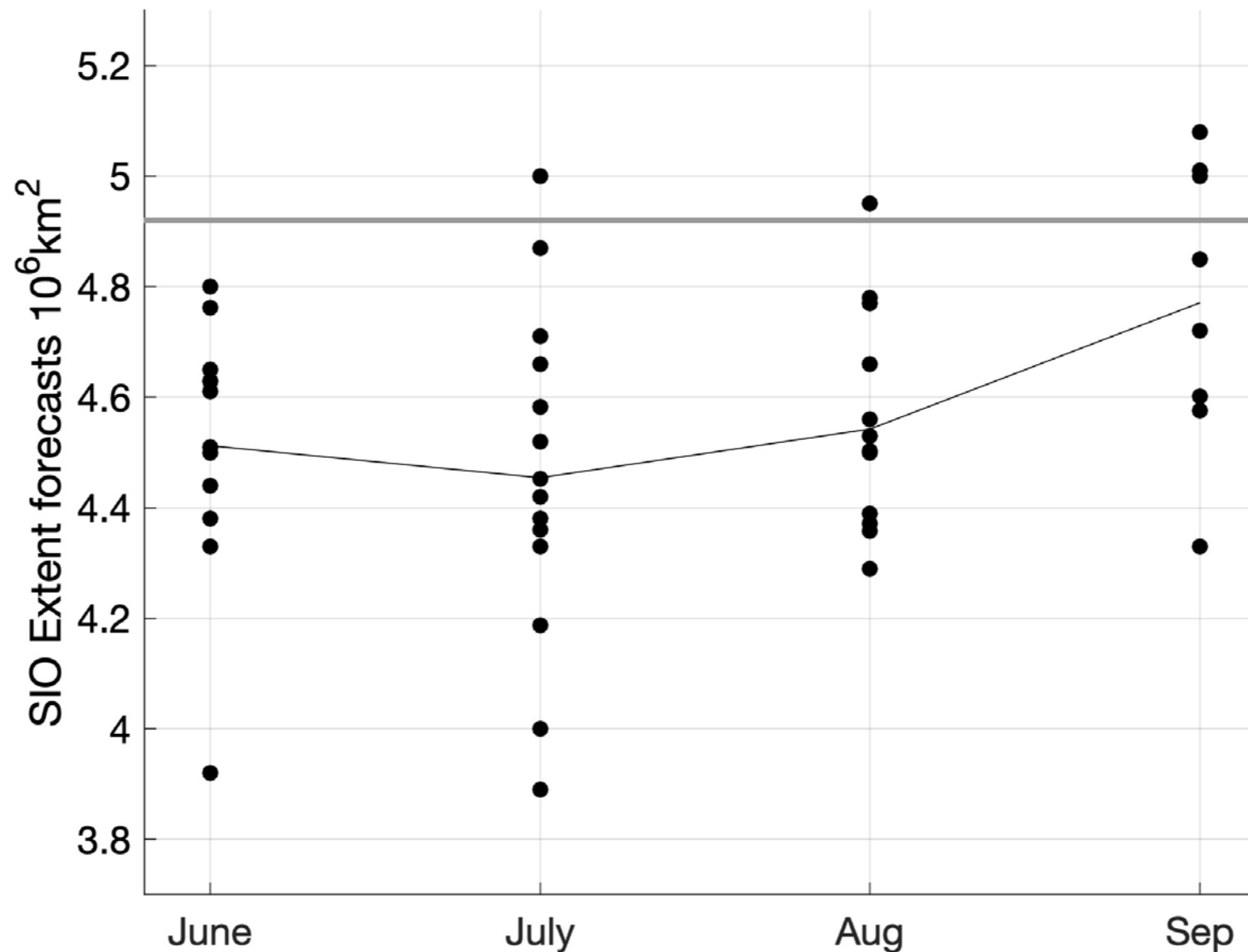
Aug 31 2021+ historic September SIE tendencies ('Meier model')



# Anomaly Extent forecasts

*'...motivated by the large spread in SIO predictions of mean September sea-ice extent. Some of this spread likely reflects inter-model biases, i.e., some models consistently overestimate ice extent while others underestimate it (relative to observations).'*

Obs=4.92  
mkm<sup>2</sup>

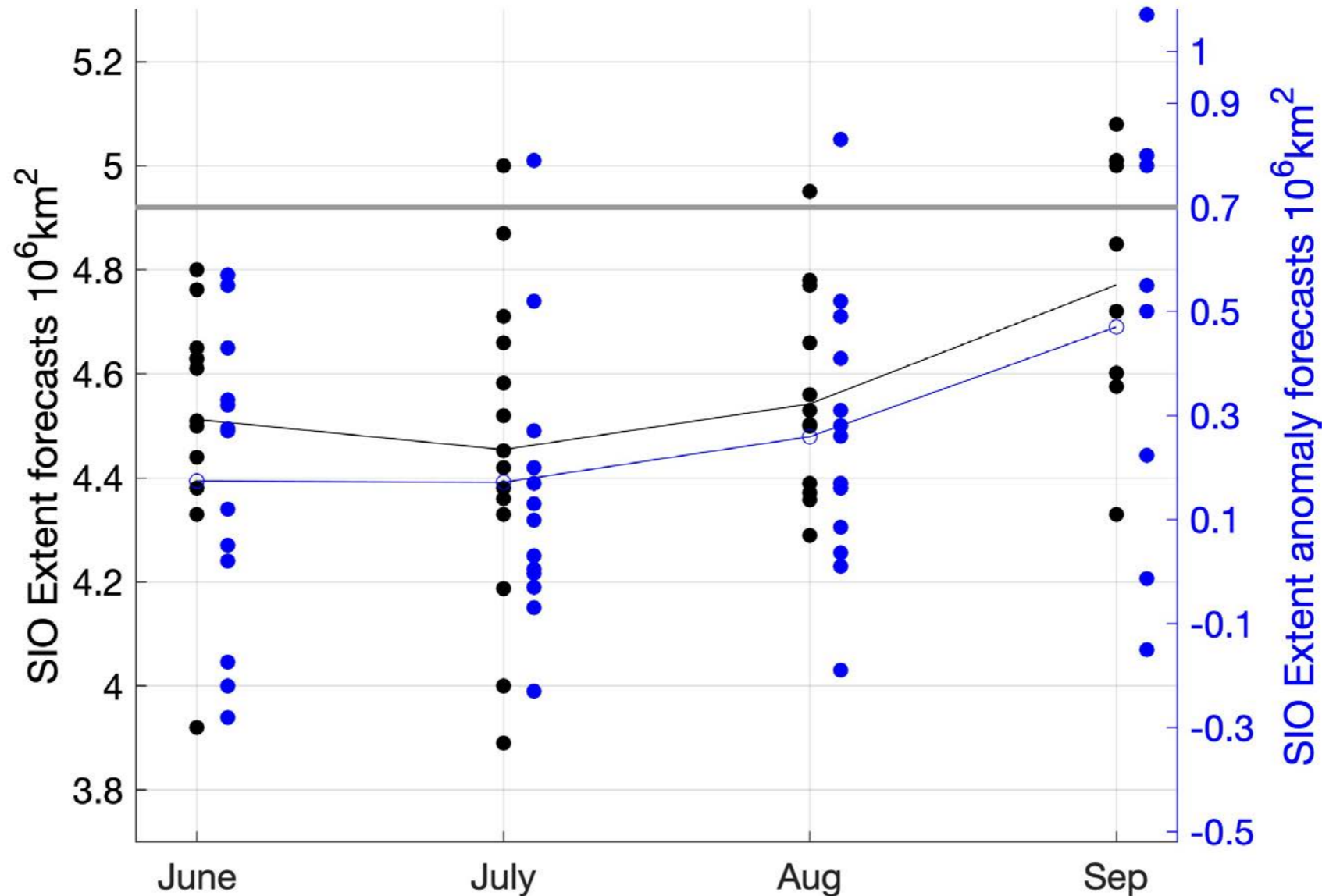




# Anomaly Extent forecasts

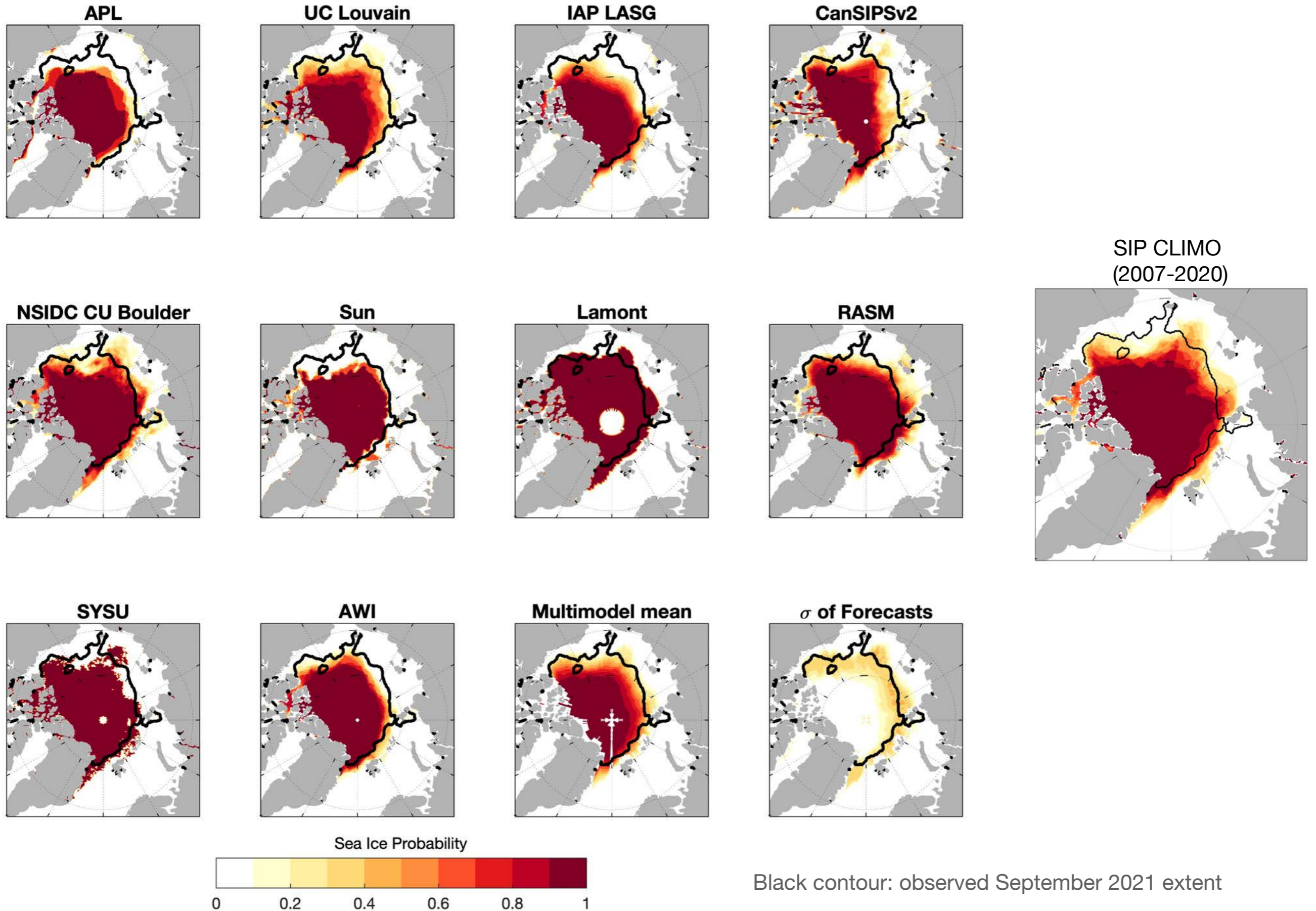
*'...motivated by the large spread in SIO predictions of mean September sea-ice extent. Some of this spread likely reflects inter-model biases, i.e., some models consistently overestimate ice extent while others underestimate it (relative to observations).'*

Obs=4.92  
mkm<sup>2</sup>



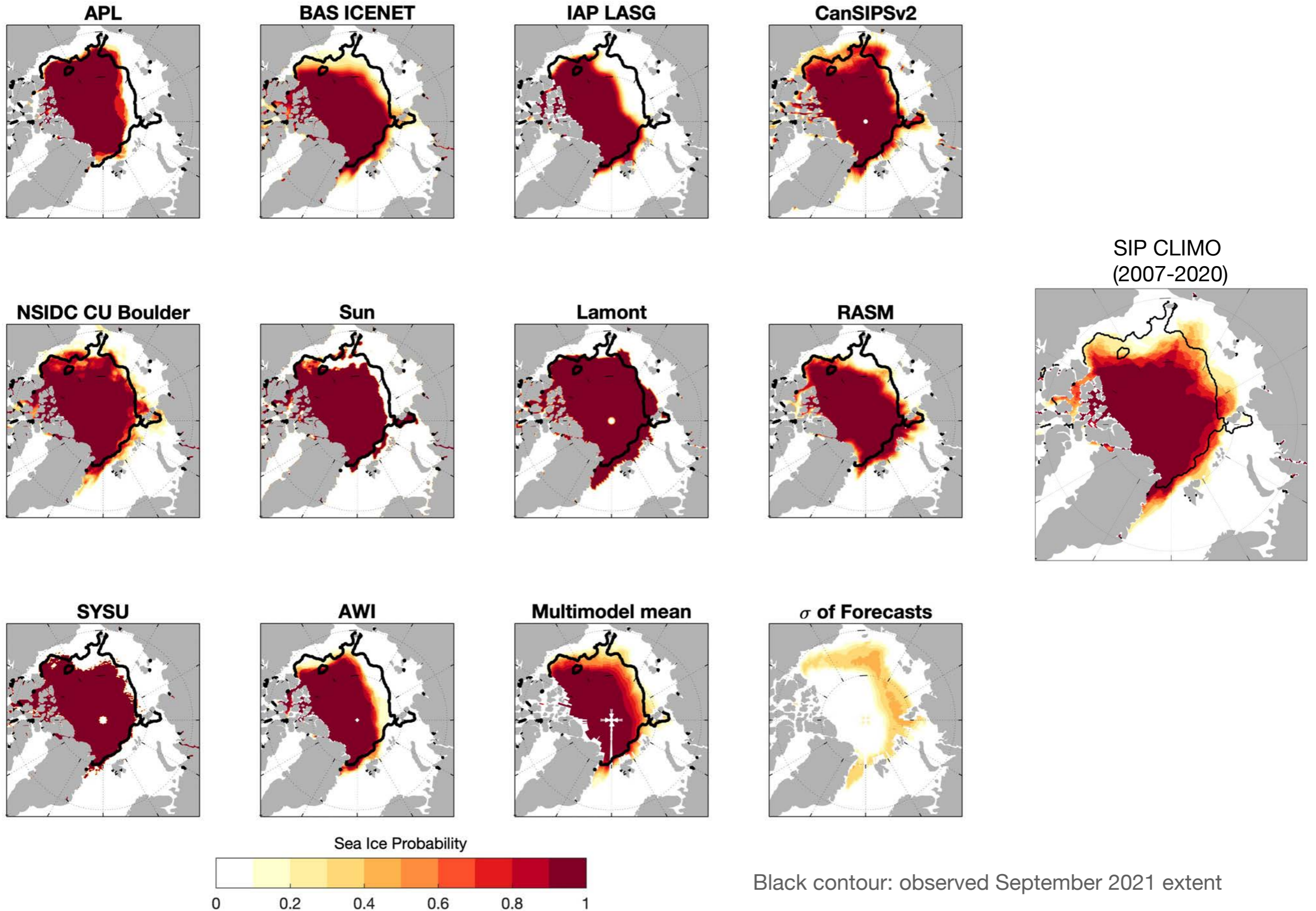
Obs anom=0.7  
mkm<sup>2</sup>

# Sea ice probability (June 2021 SIO)





# Sea ice probability (June 2021 SIO)



# Area-weighted average Brier Scores

