



# Modern Architecture of the Arctic Research Facilities

---

*Valeria Savinova*

*Moscow Institute of Architecture*

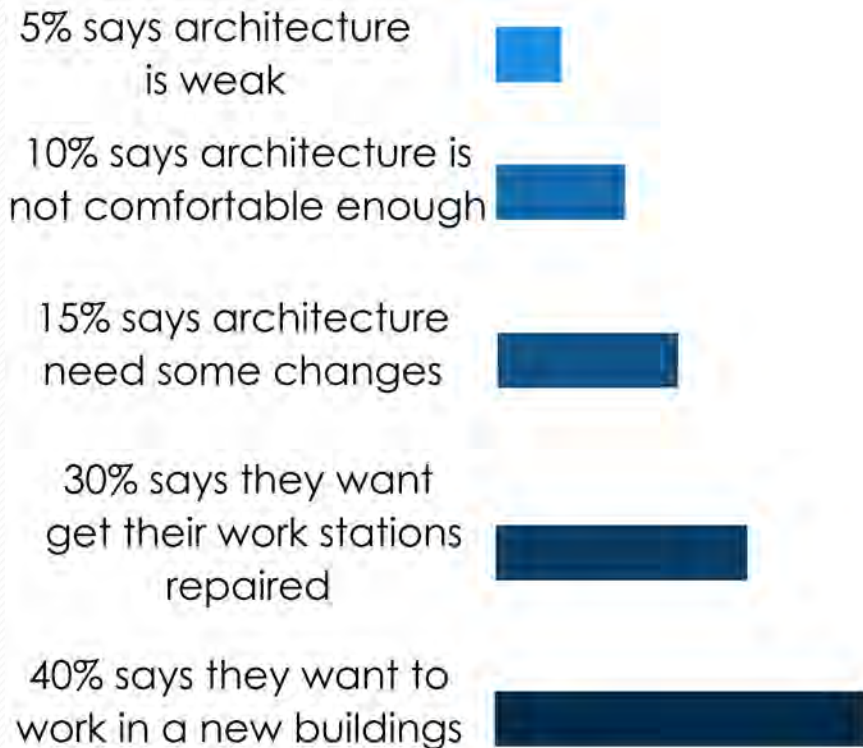
*[araseilis7714@gmail.com](mailto:araseilis7714@gmail.com)*



# Arctic needs a new architecture



## Surveys of polar explorers about architecture of research facilities in the Arctic.



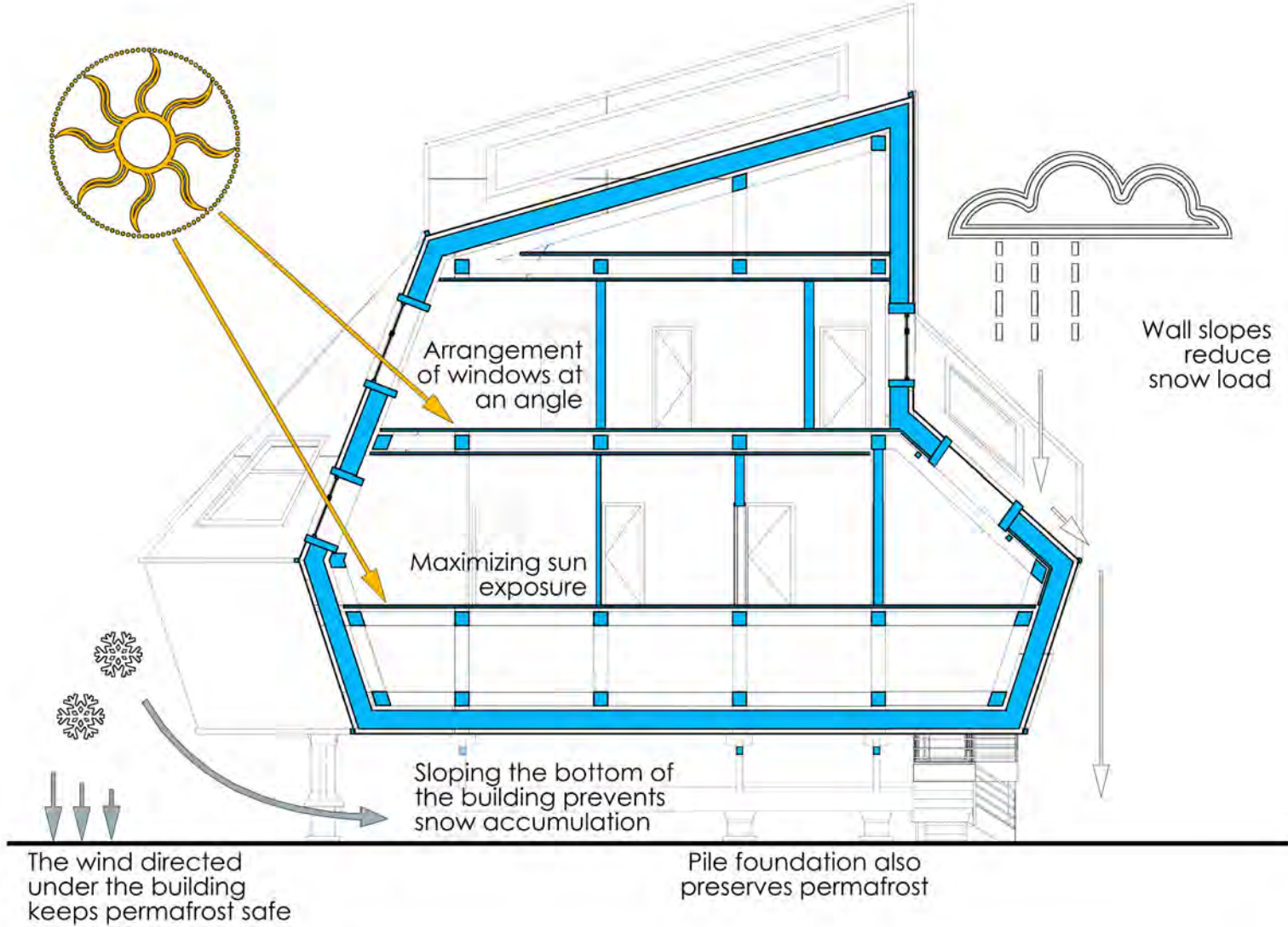
5 new stations opened in XXI century.

More than 20 stations is closed.

More than 30 stations were opened during XX century and NEVER were rebuilt or repaired.

Research facilities needs a new architecture, which operates special methods.

# Special architecture methods



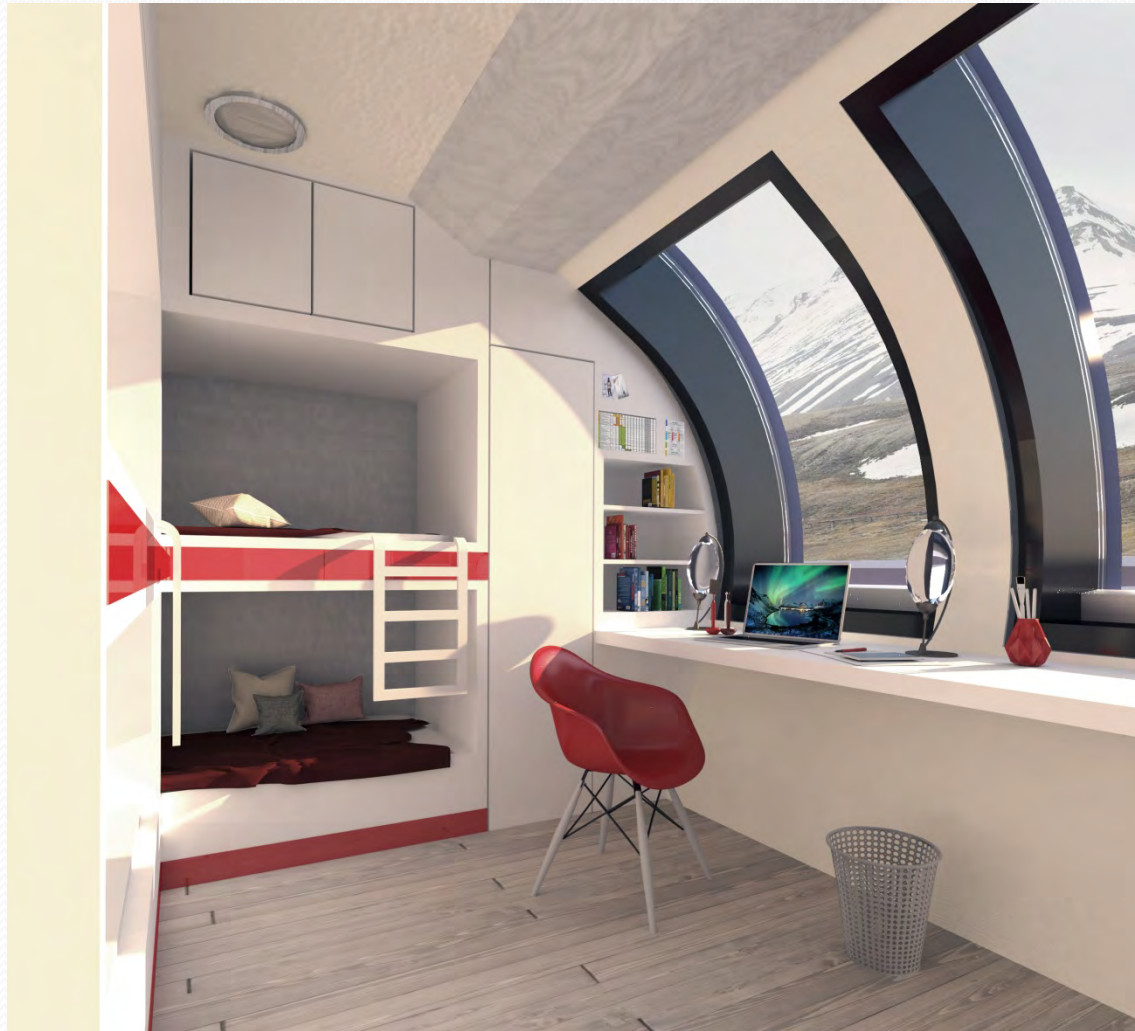
# Author's projects of research stations



# Author's projects of research stations



# Author's projects of research stations



# Author's projects of research stations





# Author's projects of research stations



# Author's projects of research stations



# Author's projects of research stations



# Author's projects of research stations





# Modern Architecture of the Arctic Research Facilities

---

*Valeria Savinova*

*Moscow Institute of Architecture*

*araseilis7714@gmail.com*

