

2008 September sea ice outlook - R. Kwok

1. Estimate of sea ice extent of the Arctic at summer minimum:  $5 \times 10^6$  km<sup>2</sup> (no change from May estimate) – see May Outlook for discussion. This value includes ice coverage outside the Arctic Basin.
2. Figures (addendum to May outlook). The following two figures show: 1) the Arctic ice extent at end of June, July, August and at its minimum during 2006, 2007, and 2008 (Fig. 1); and 2) our estimates for this summer compared to that observed in June and July. (Fig. 2).

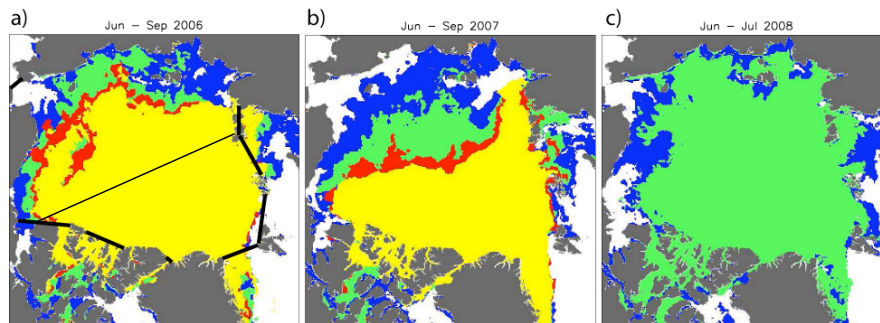


Fig. 1 (a,b) The Arctic ice extent at the end of June (blue), July (green), August (red), and at its minimum in September (yellow) during 2006 and 2007. (c) The two months of 2008 from passive microwave estimates.

See page 2...

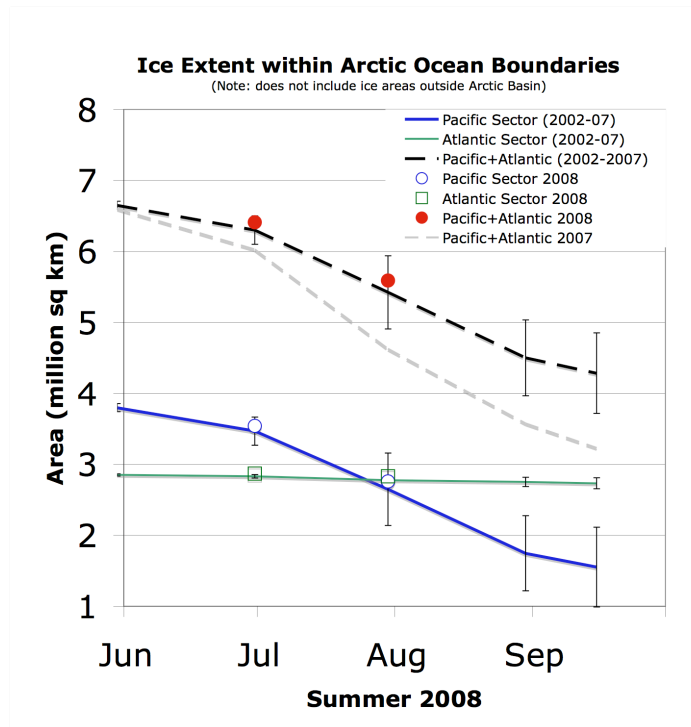


Fig. 2 Comparison of our Arctic Ocean ice extent estimates (black dashed line) with that in 2007 (dashed light gray) within the boundaries shown in Fig. 1a. Red dots show the observed extent at the end of June and July from passive microwave analyses. The blue line and blue circles are the estimated and observed ice extents in the Pacific Sector. The green line and green squares are the estimated and observed ice extents in the Atlantic Sector. The line that separates the Pacific and Atlantic Sectors are shown in Fig. 1a.